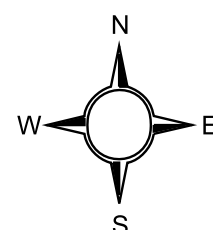
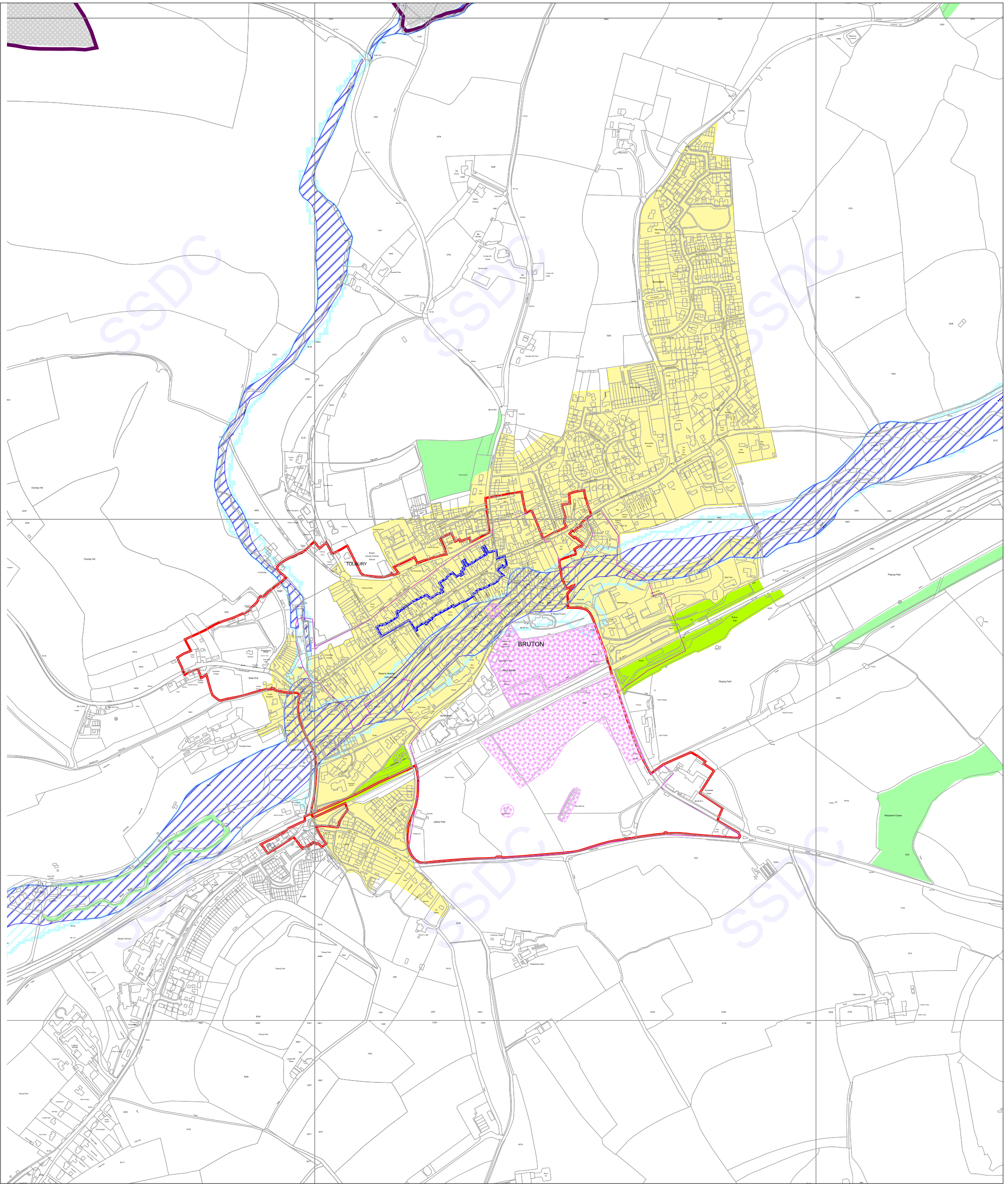


South Somerset Local Plan 2006 - 2028

Ansford / Castle Cary - Inset Map 1 (Adopted 2015)

1:7,500

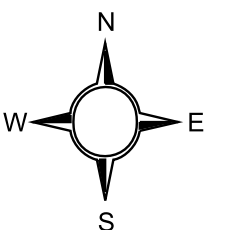


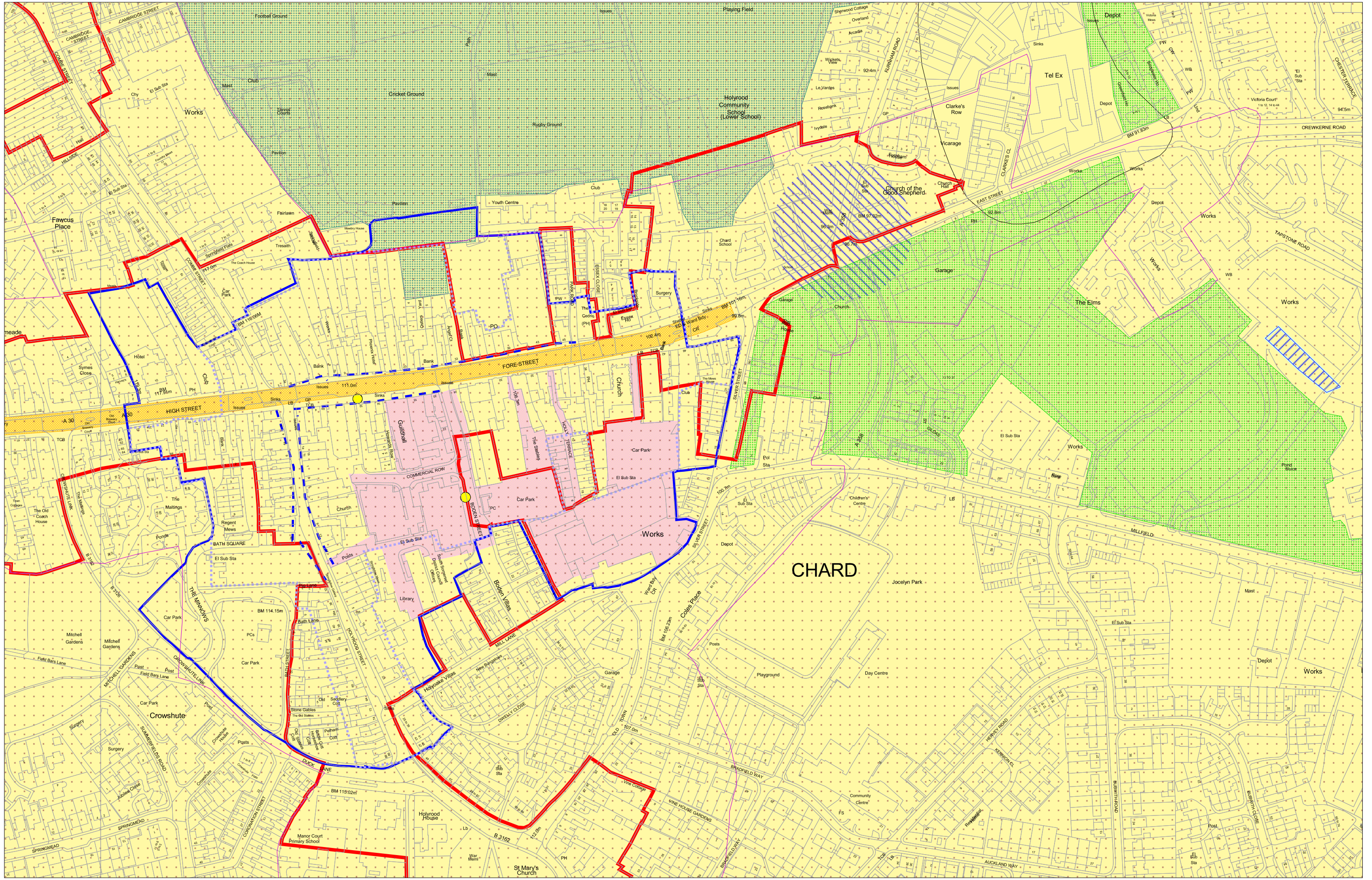


South Somerset Local Plan 2006 - 2028

Bruton - Inset Map 2 (Adopted 2015)

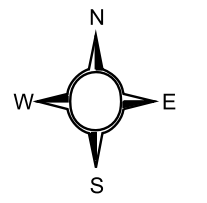
1:7,000



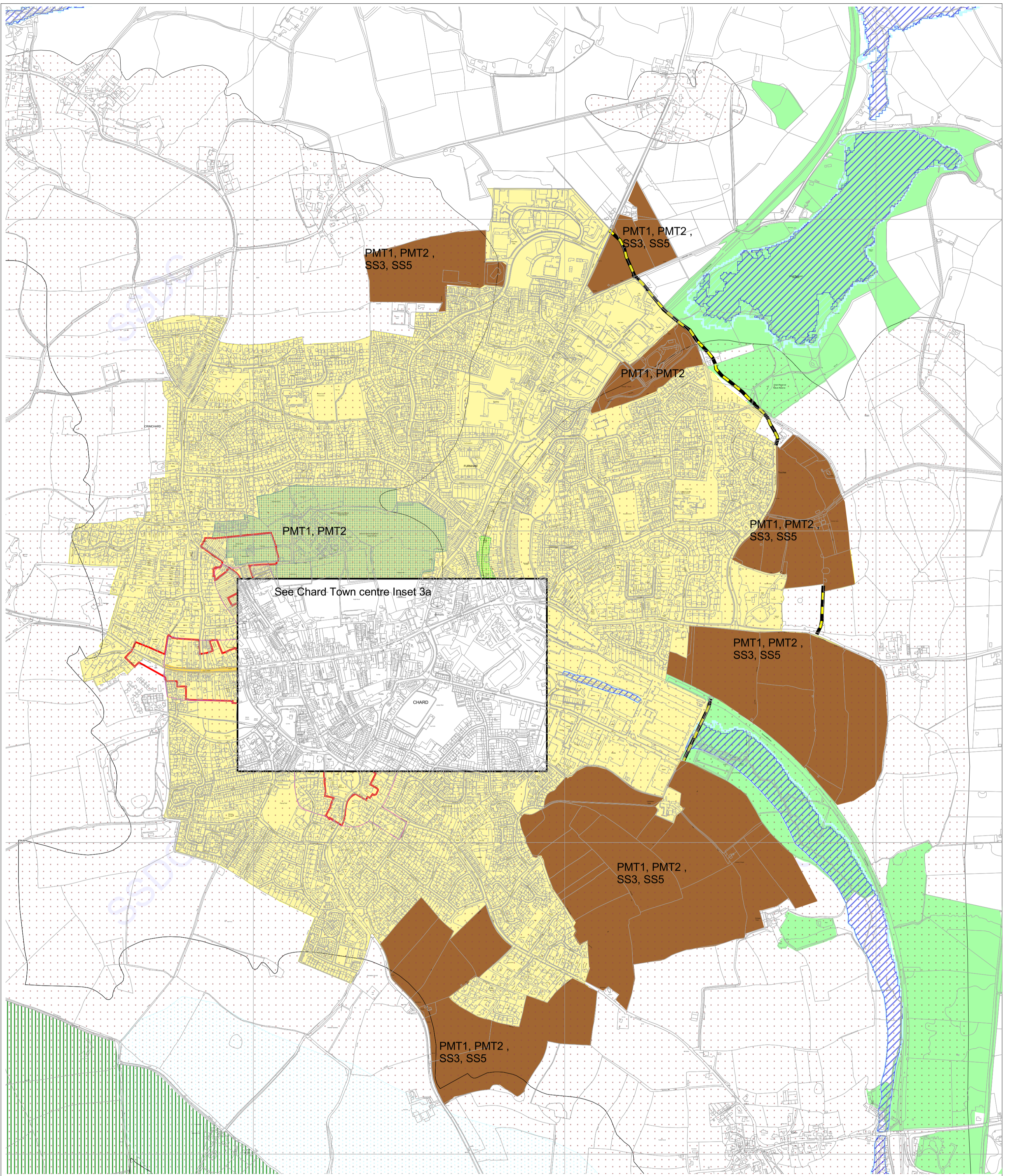


South Somerset Local Plan 2006 - 2028
 Chard Town Centre - Inset Map 3a (Adopted 2015)

1:8,000



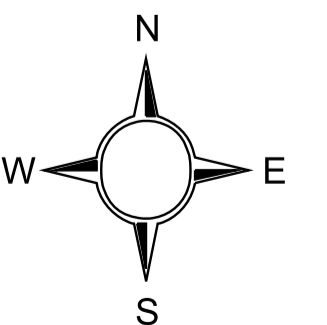
This map is reproduced from Ordnance Survey material with the permission of Ordnance Survey on behalf of the Controller of Her Majesty's Stationery Office © Crown Copyright. Unauthorised reproduction infringes Crown Copyright and may lead to prosecution or civil proceedings. South Somerset District Council Licence No. LA100019471-2015

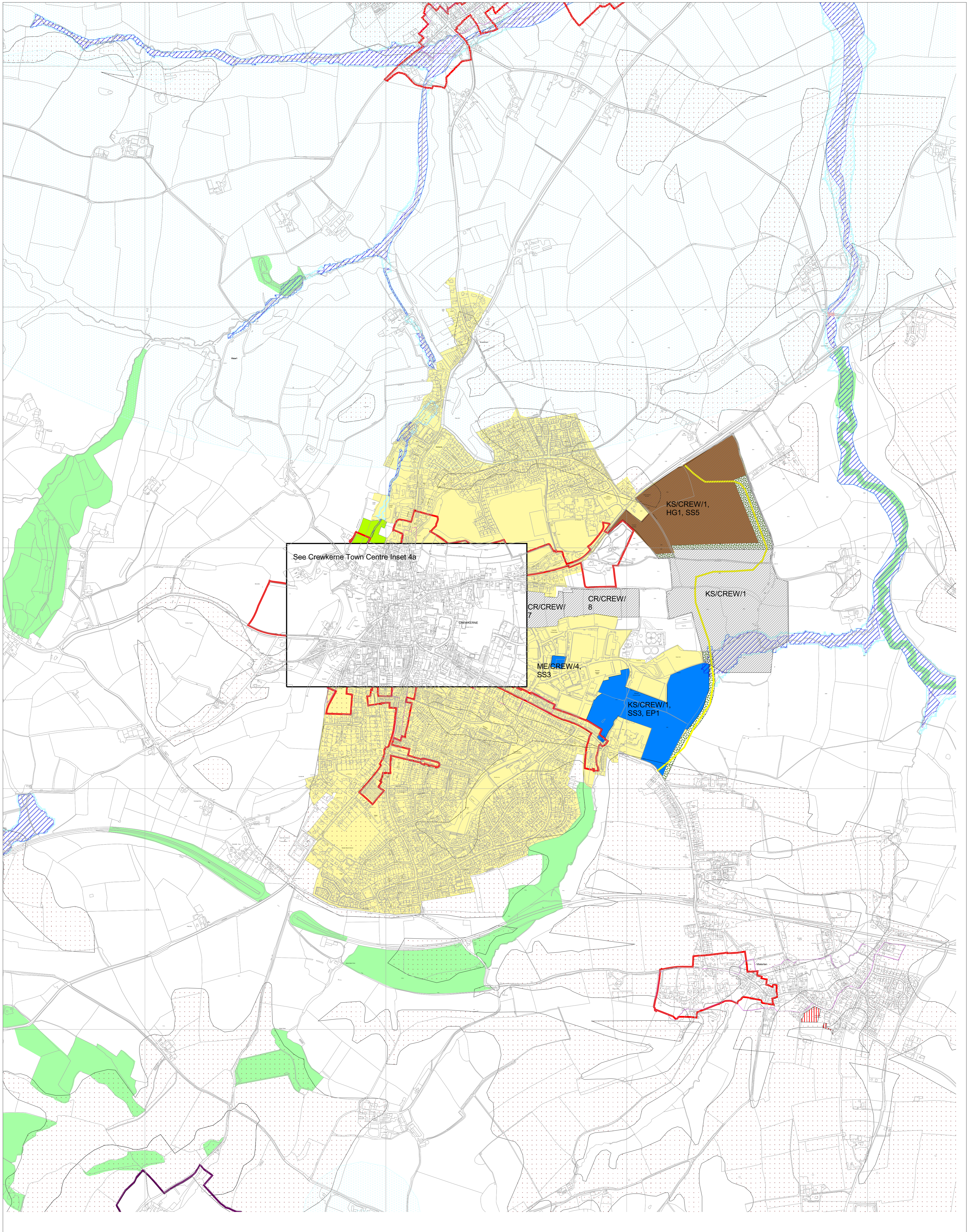


South Somerset Local Plan 2006 - 2028

Chard - Inset Map 3 (Adopted 2015)

1:8,000

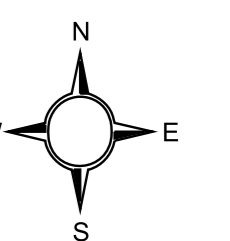


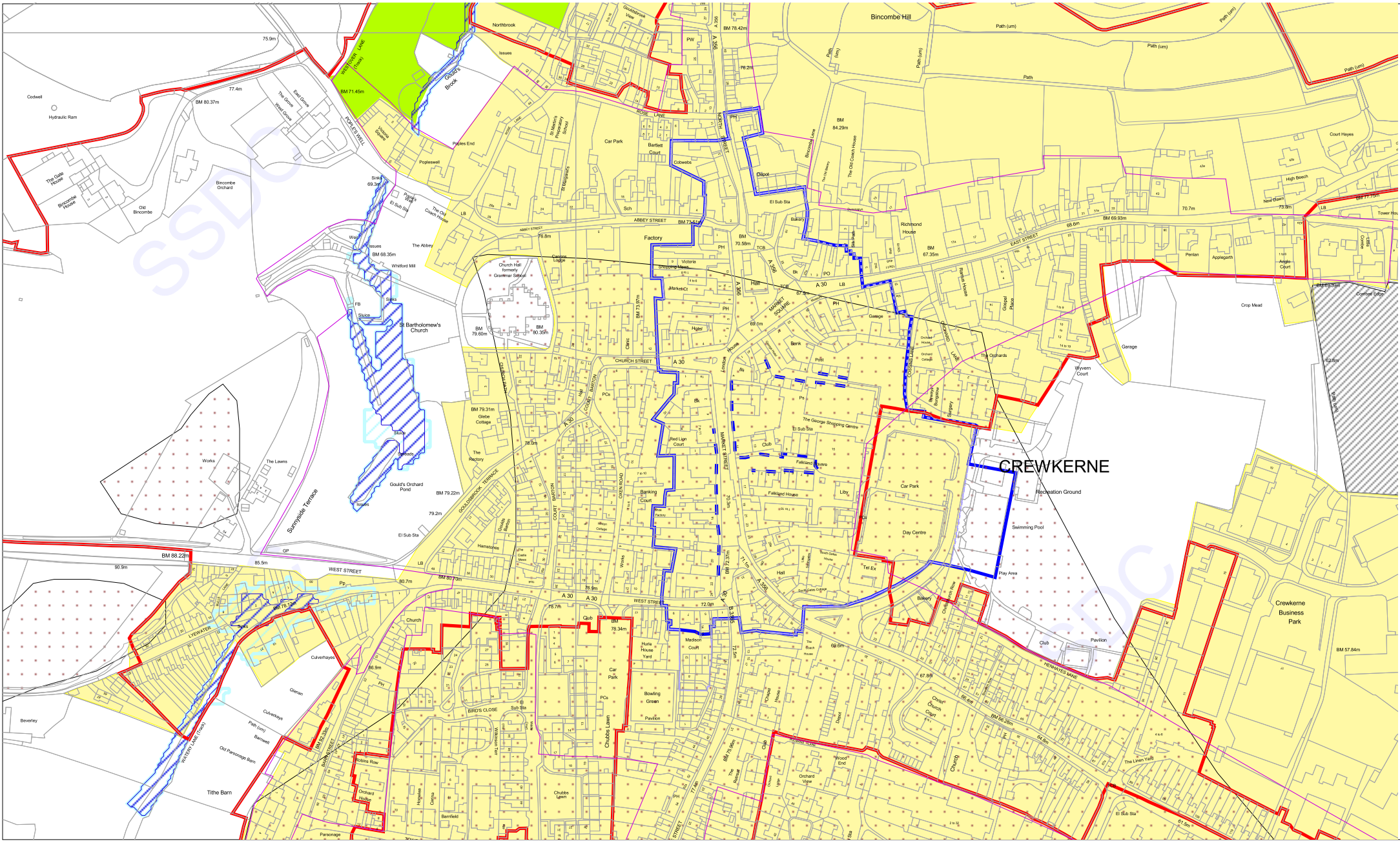


South Somerset Local Plan 2006 - 2026

Crewkerne - Inset Map 4 (Adopted 2015)

1:7,000

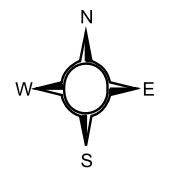


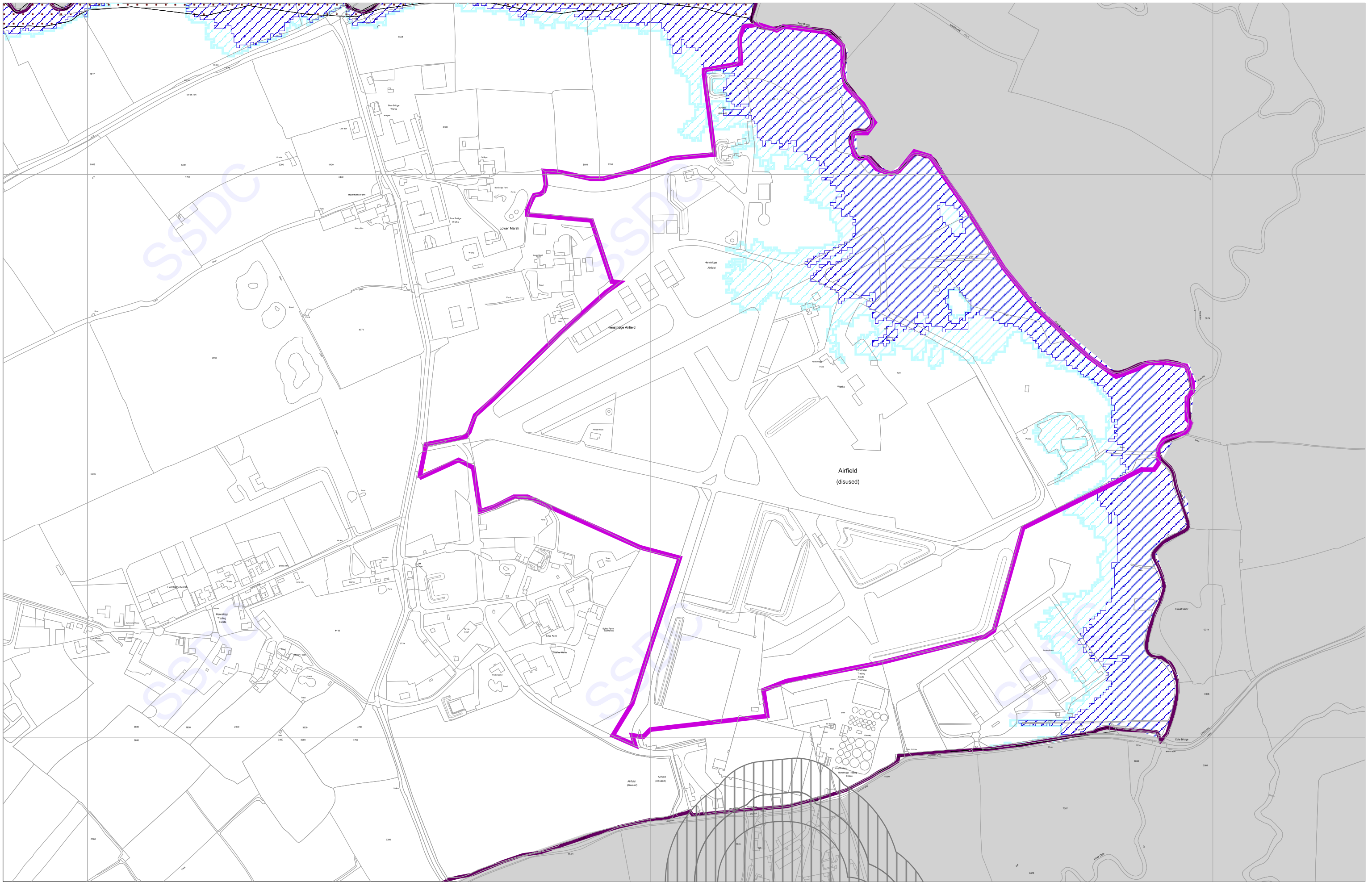


South Somerset Local Plan 2006 - 2028 Crewkerne Town Centre - Inset 4a (Adopted 2015)

1:3,500

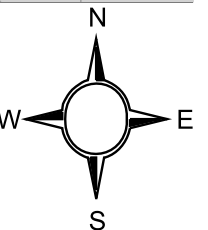
This map is reproduced from Ordnance Survey material with the permission of Ordnance Survey on behalf of the Controller of Her Majesty's Stationery Office © Crown Copyright. Unauthorised reproduction infringes Crown Copyright and may lead to prosecution or civil proceedings. South Somerset District Council Licence No. LA100019471-2015

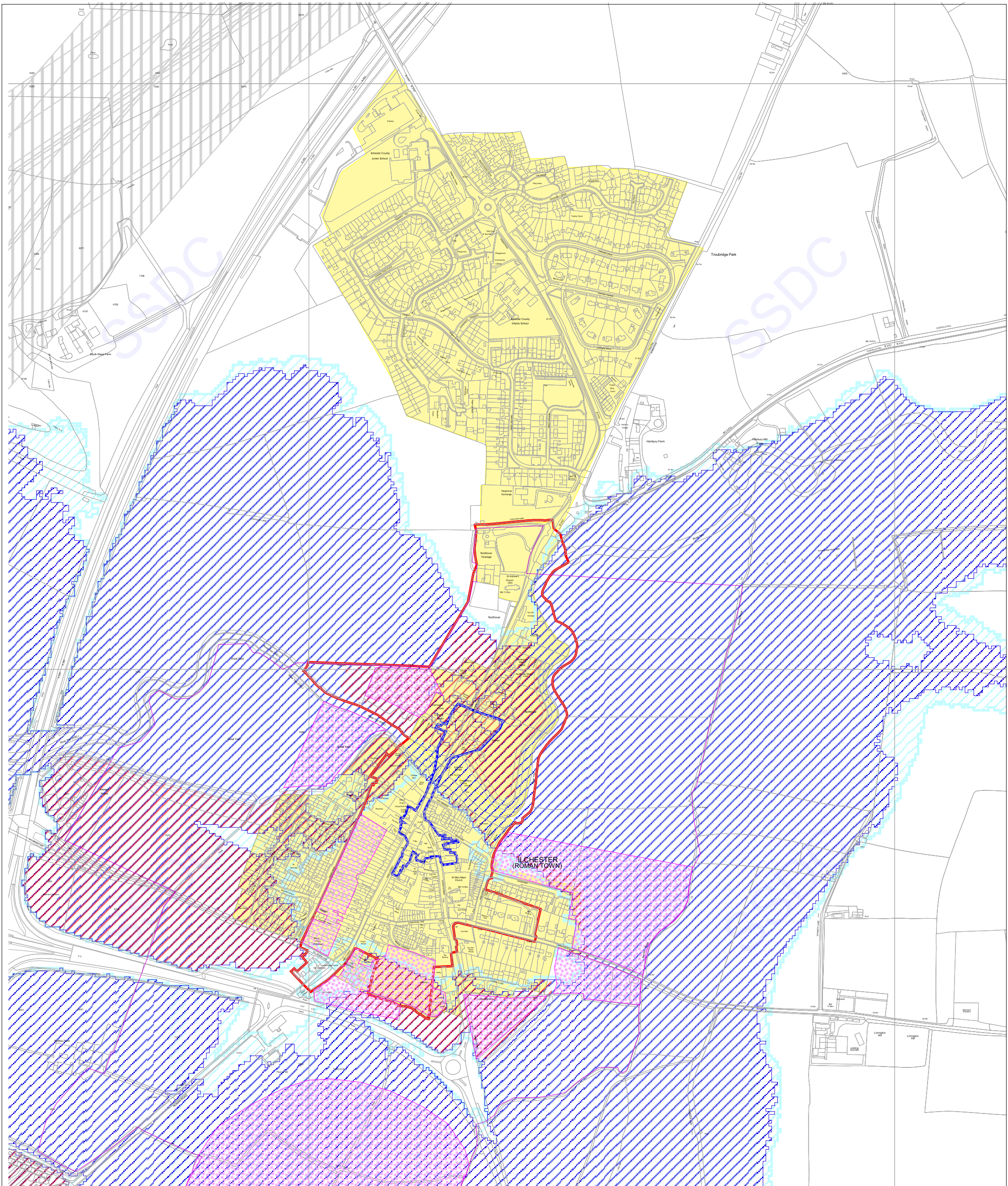




South Somerset Local Plan 2006 - 2028
Henstridge - Inset Map 5 (Adopted 2015)

1:6,000

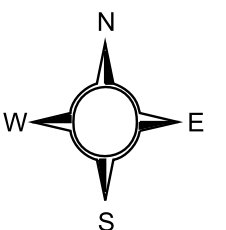


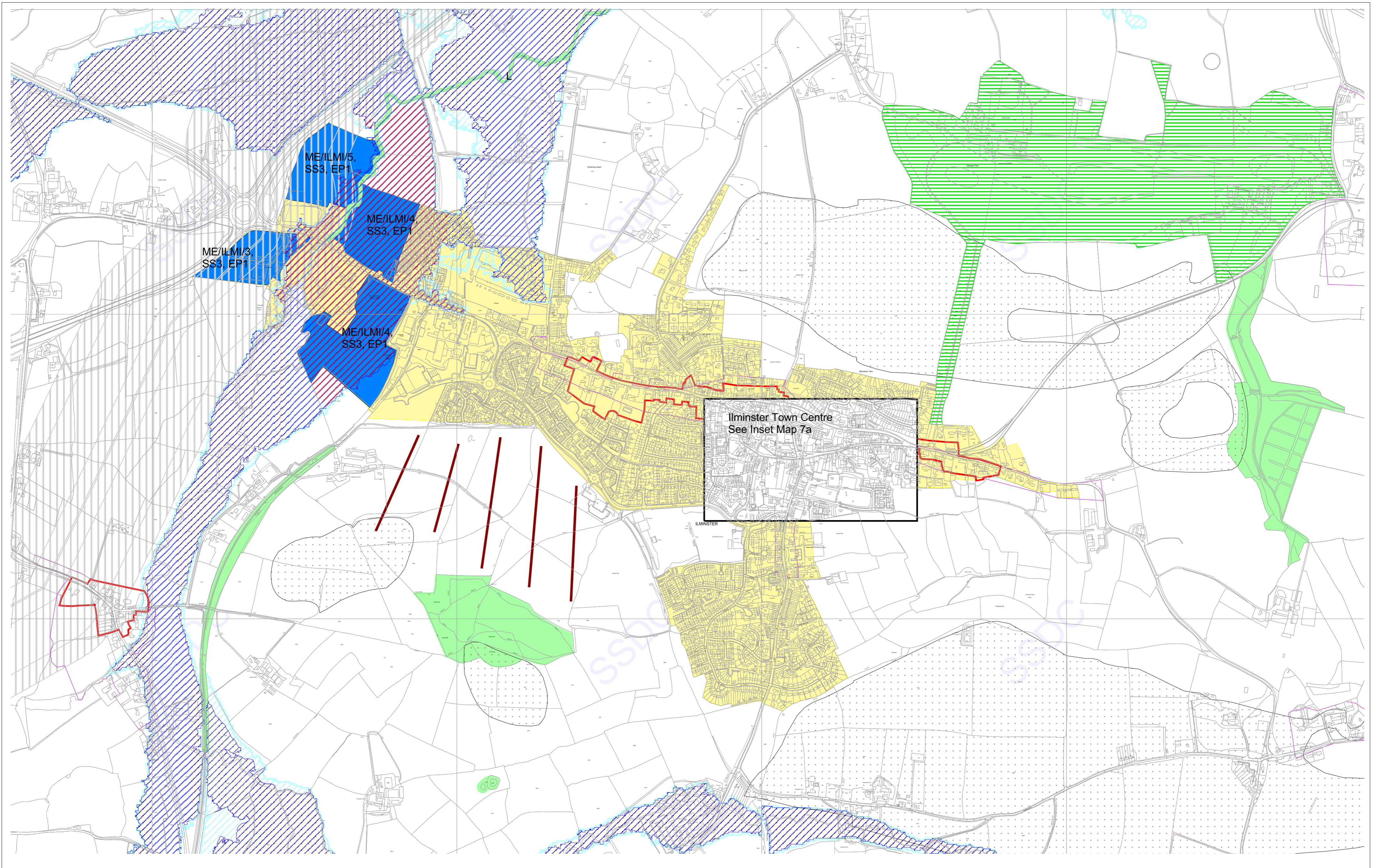


South Somerset Local Plan 2006 - 2028 Ilchester - Inset Map 6 (Adopted 2015)

1:6,000

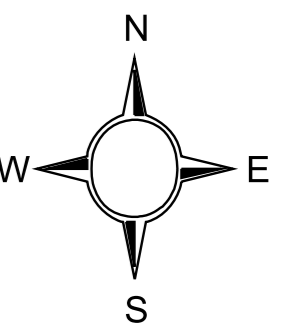
For Ilchester Noise Contours Map see Appendix 4a



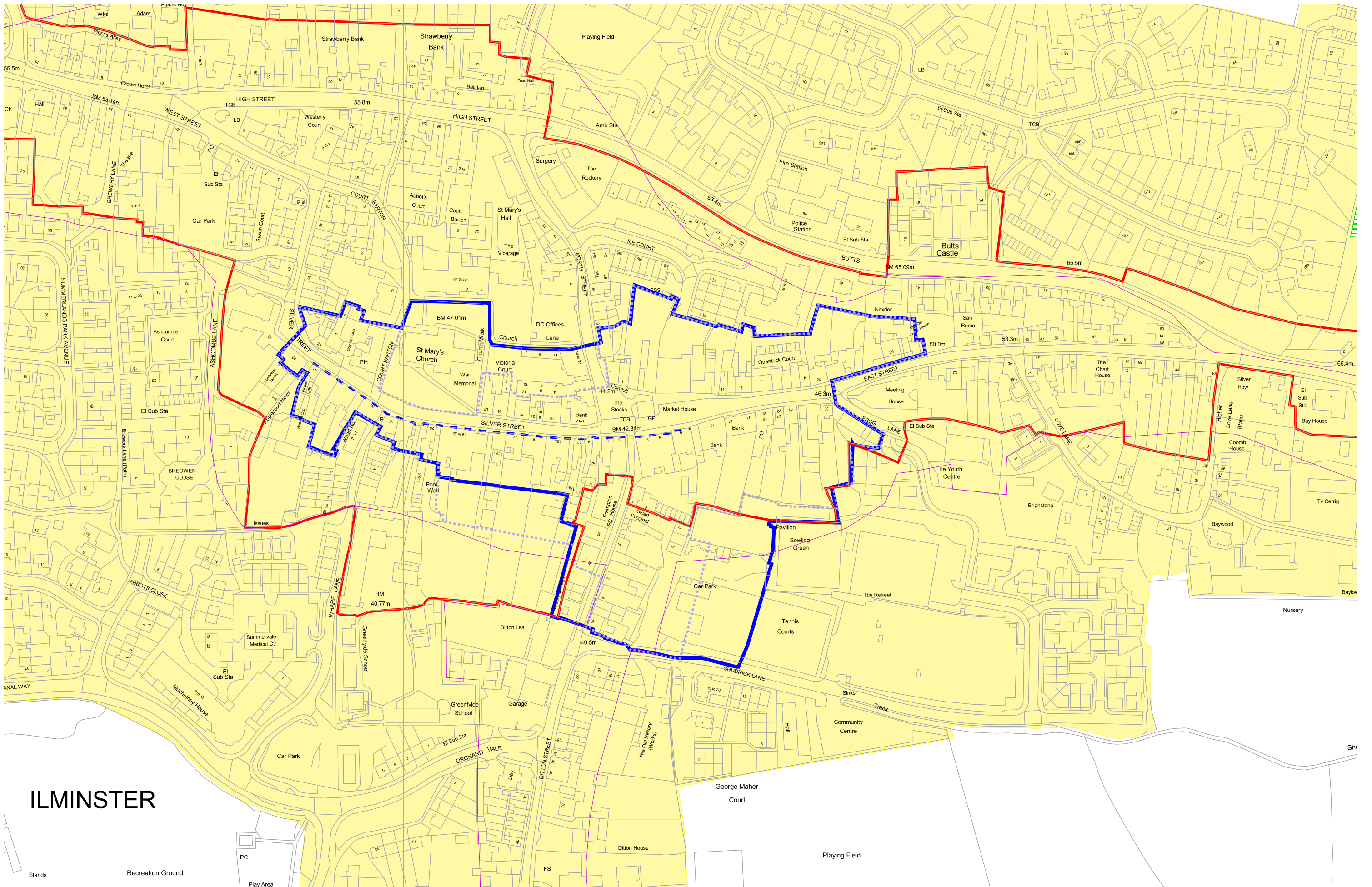


South Somerset Local Plan 2006 - 2028
 Ilminster - Inset Map 7 (Adopted 2015)

1:8,000

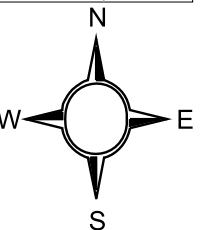


This map is reproduced from Ordnance Survey material with the permission of Ordnance Survey on behalf of the Controller of Her Majesty's Stationery Office © Crown Copyright. Unauthorised reproduction infringes Crown Copyright and may lead to prosecution or civil proceedings. South Somerset District Council Licence No. LA100019471-2015

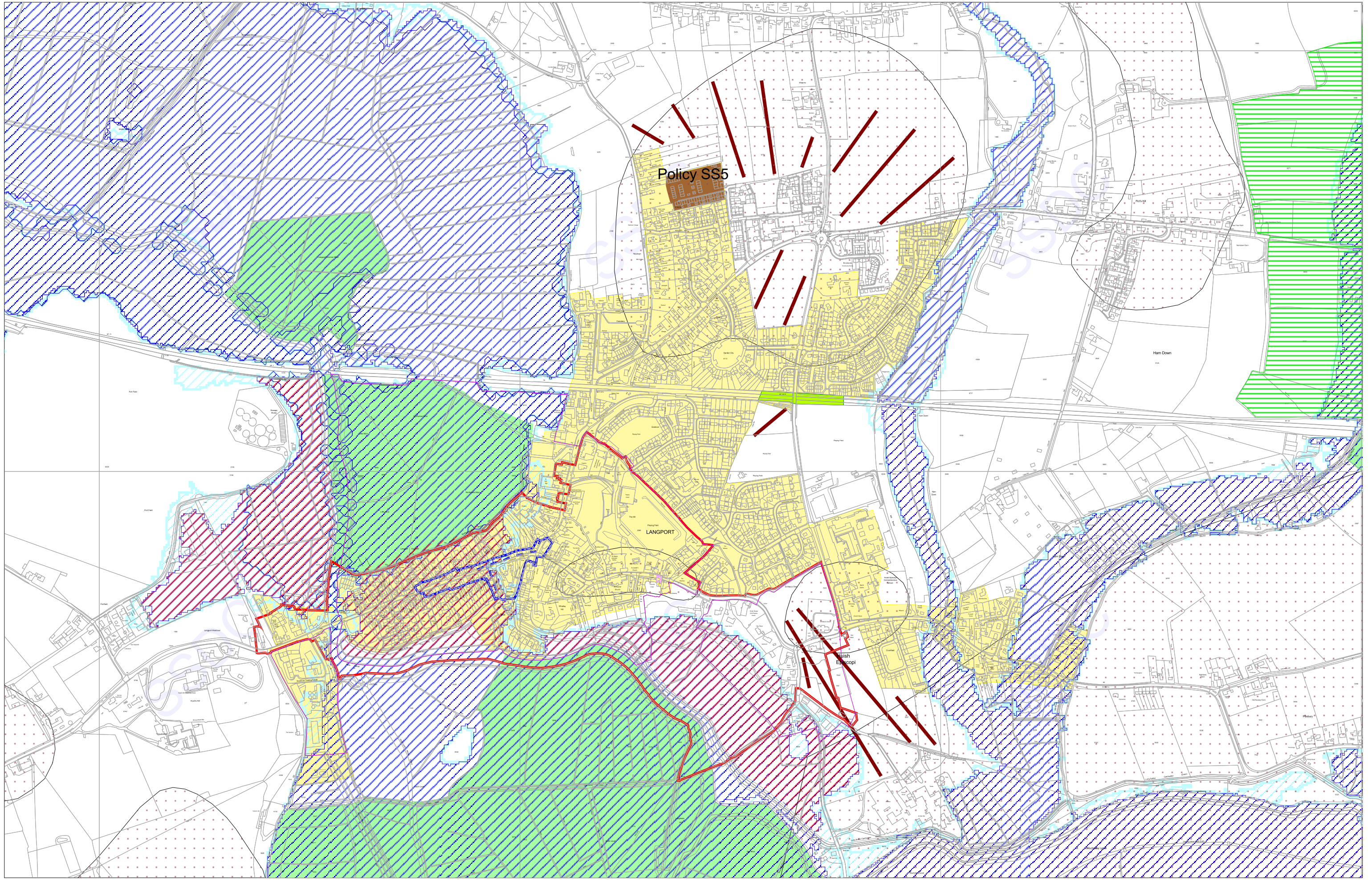


South Somerset Local Plan 2006 - 2028
 Iminster Town Centre - Inset Map 7a (Adopted 2015)

1:2,000



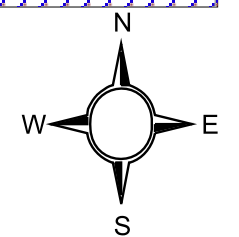
This map is reproduced from Ordnance Survey material with the permission of Ordnance Survey on behalf of the Controller of Her Majesty's Stationery Office © Crown Copyright. Unauthorised reproduction infringes Crown Copyright and may lead to prosecution or civil proceedings. South Somerset District Council Licence No. LA100019471-2015

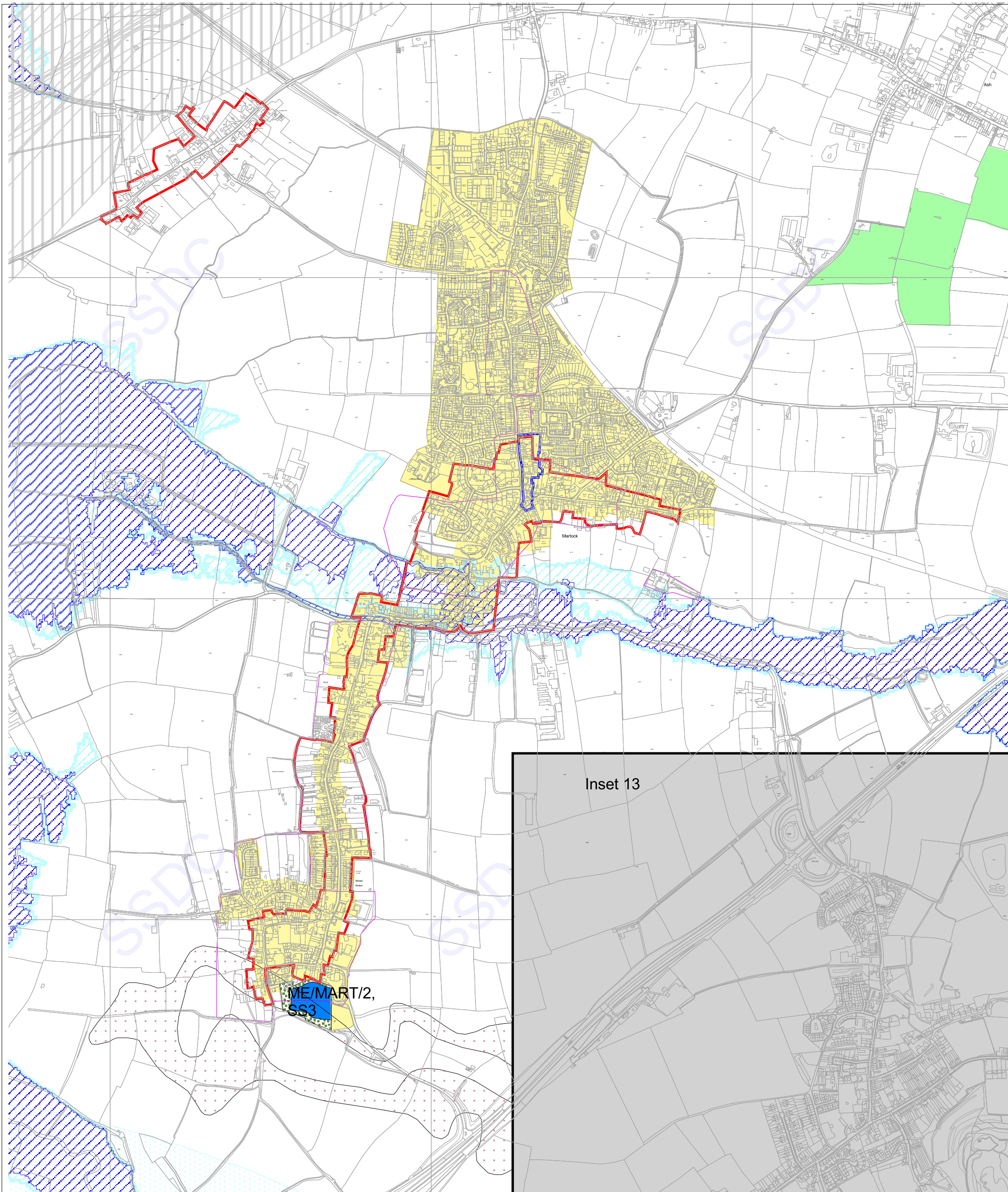


South Somerset Local Plan 2006 - 2028
Langport / Huish Episcopi - Inset Map 8 (Adopted 2015)

1:8,000

This map is reproduced from Ordnance Survey material with the permission of Ordnance Survey on behalf of the Controller of Her Majesty's Stationery Office © Crown Copyright. Unauthorised reproduction infringes Crown Copyright and may lead to prosecution or civil proceedings. South Somerset District Council Licence No. LA100019471-2015

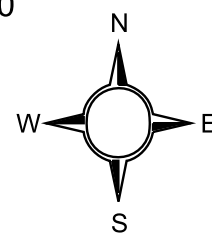


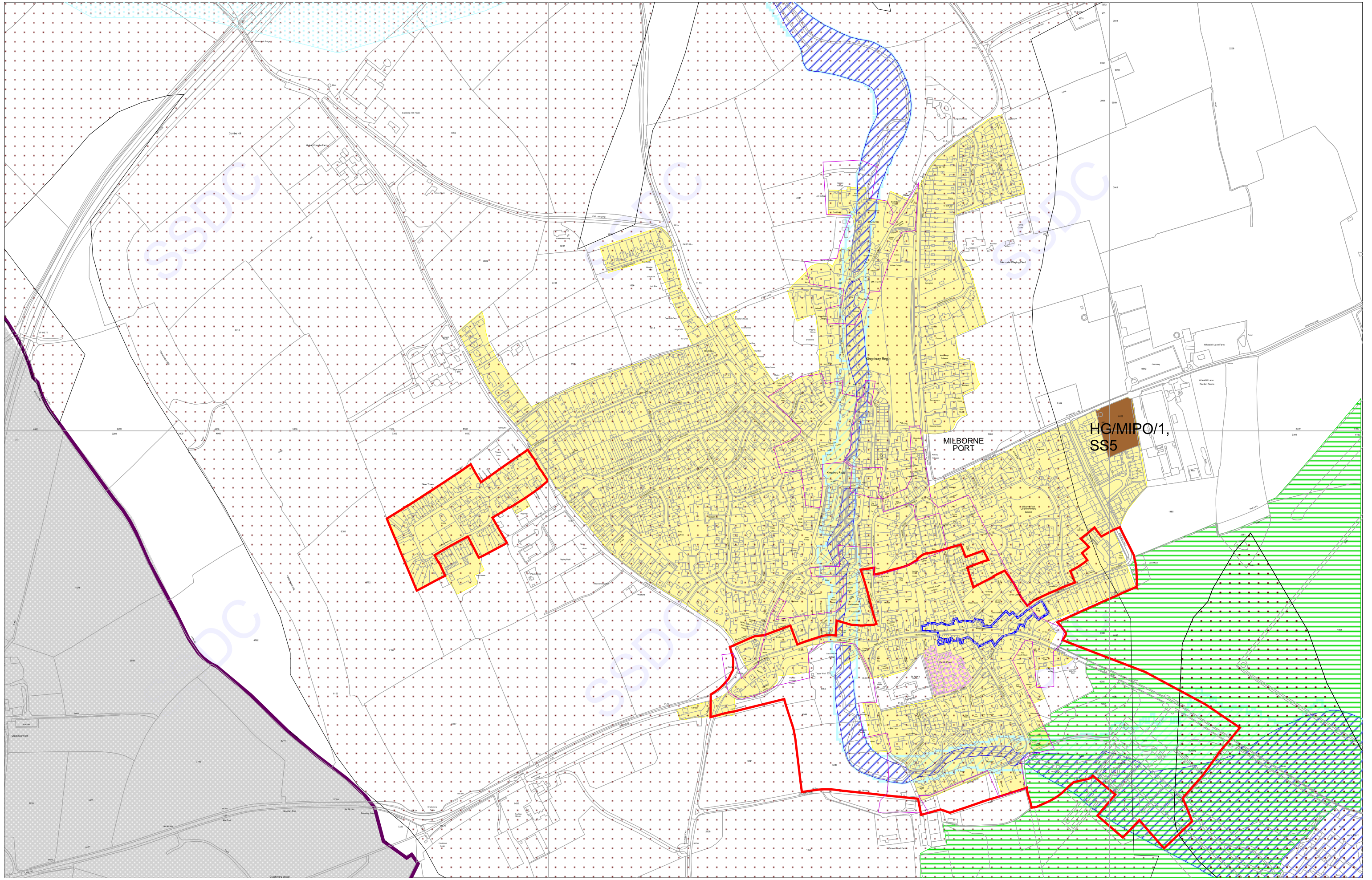


South Somerset Local Plan 2006 - 2028

Martock - Inset Map 9 (Adopted 2015)

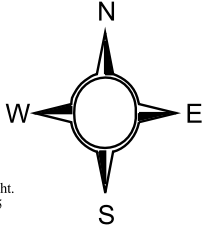
1:11,000



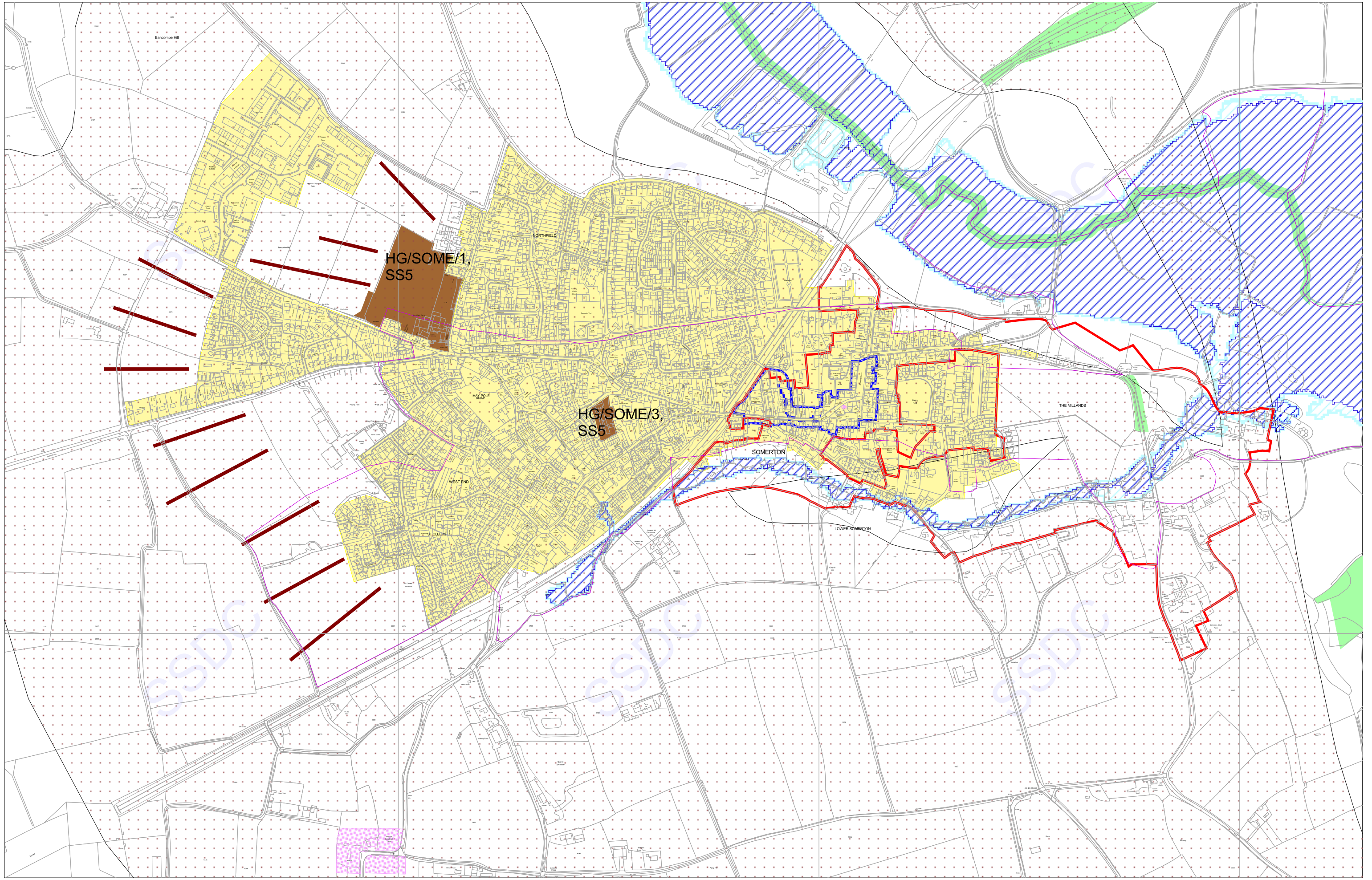


South Somerset Local Plan 2006 - 2028
Milborne Port - Inset Map 10 (Adopted 2015)

1:6,000

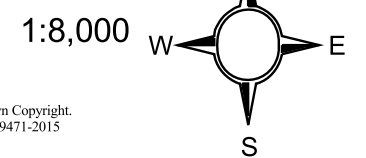


This map is reproduced from Ordnance Survey material with the permission of Ordnance Survey on behalf of the Controller of Her Majesty's Stationery Office © Crown Copyright. Unauthorised reproduction infringes Crown Copyright and may lead to prosecution or civil proceedings. South Somerset District Council Licence No. LA100019471-2015

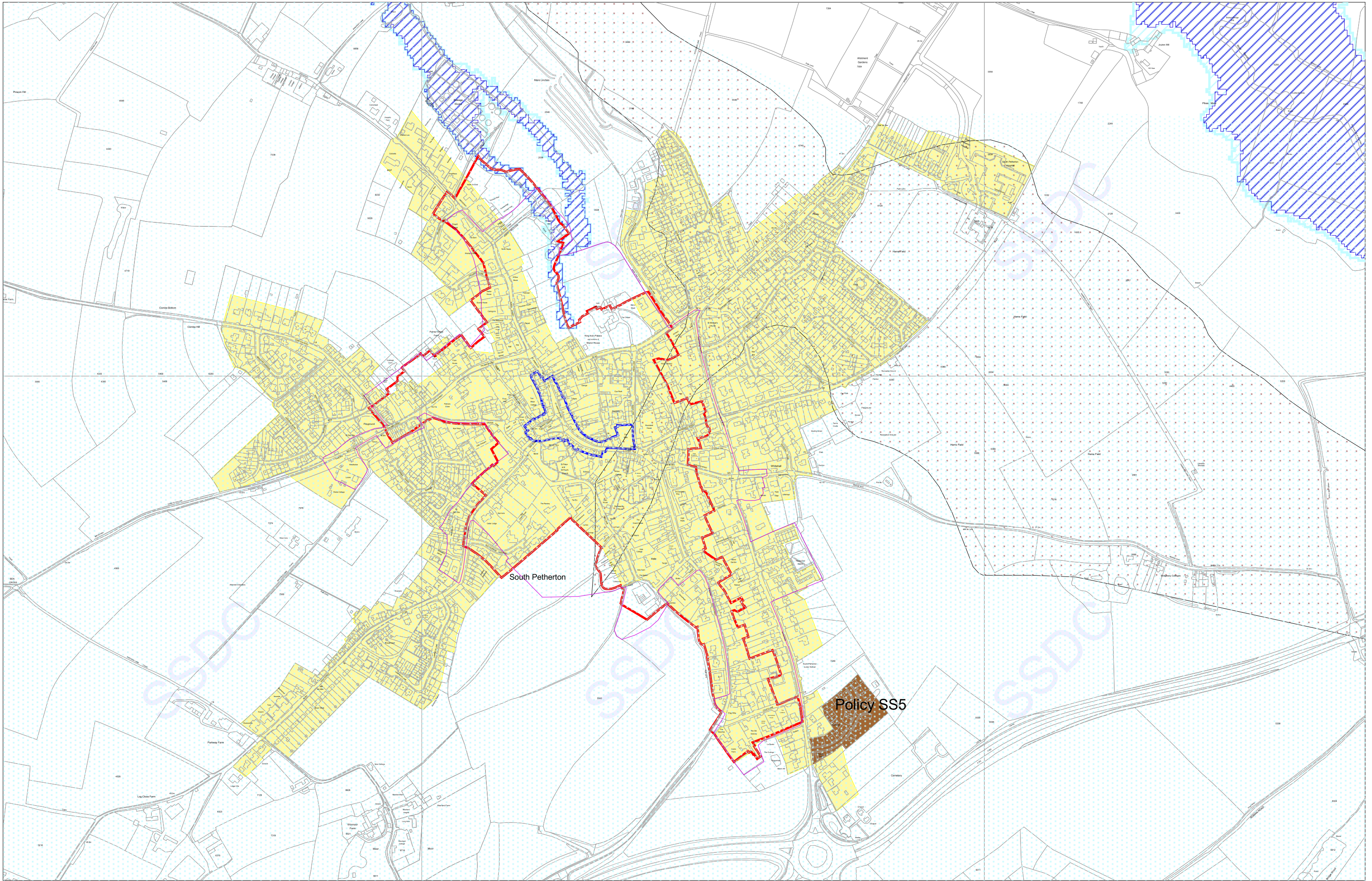


South Somerset Local Plan 2006 - 2028
 Somerton - Inset Map 11 (Adopted 2015)

N.B. Extent of Conservation Area: The outer 'ring' is the Conservation Area, but the internal area is not covered by the Conservation Area designation.

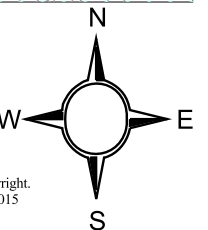


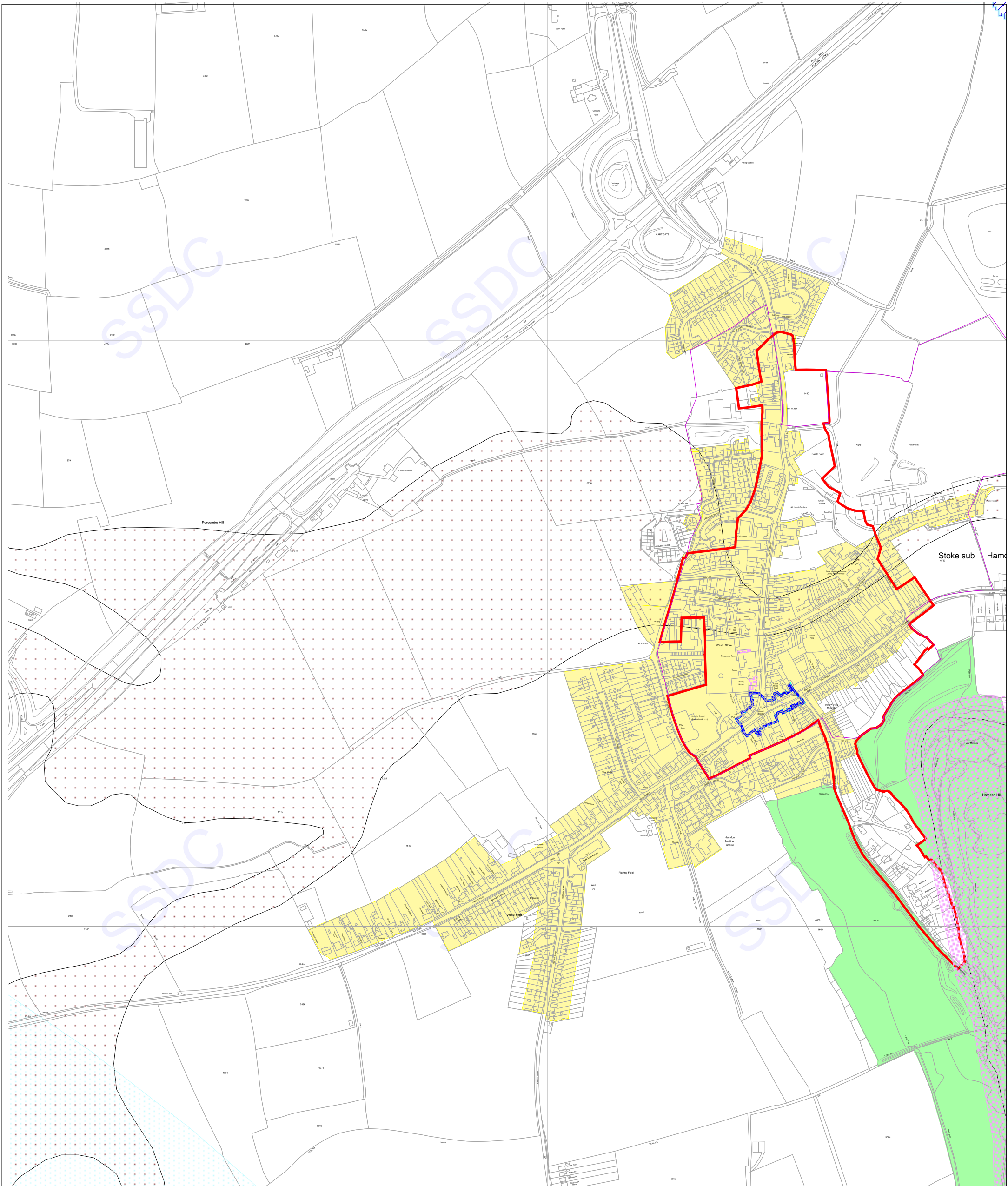
This map is reproduced from Ordnance Survey material with the permission of Ordnance Survey on behalf of the Controller of Her Majesty's Stationery Office © Crown Copyright. Unauthorised reproduction infringes Crown Copyright and may lead to prosecution or civil proceedings. South Somerset District Council Licence No. LA100019471-2015



South Somerset Local Plan 2006 - 2028
South Petherton - Inset Map 12 (Adopted 2015)

1:6,000

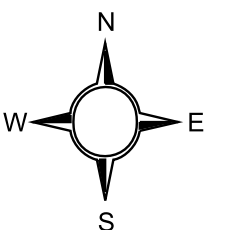


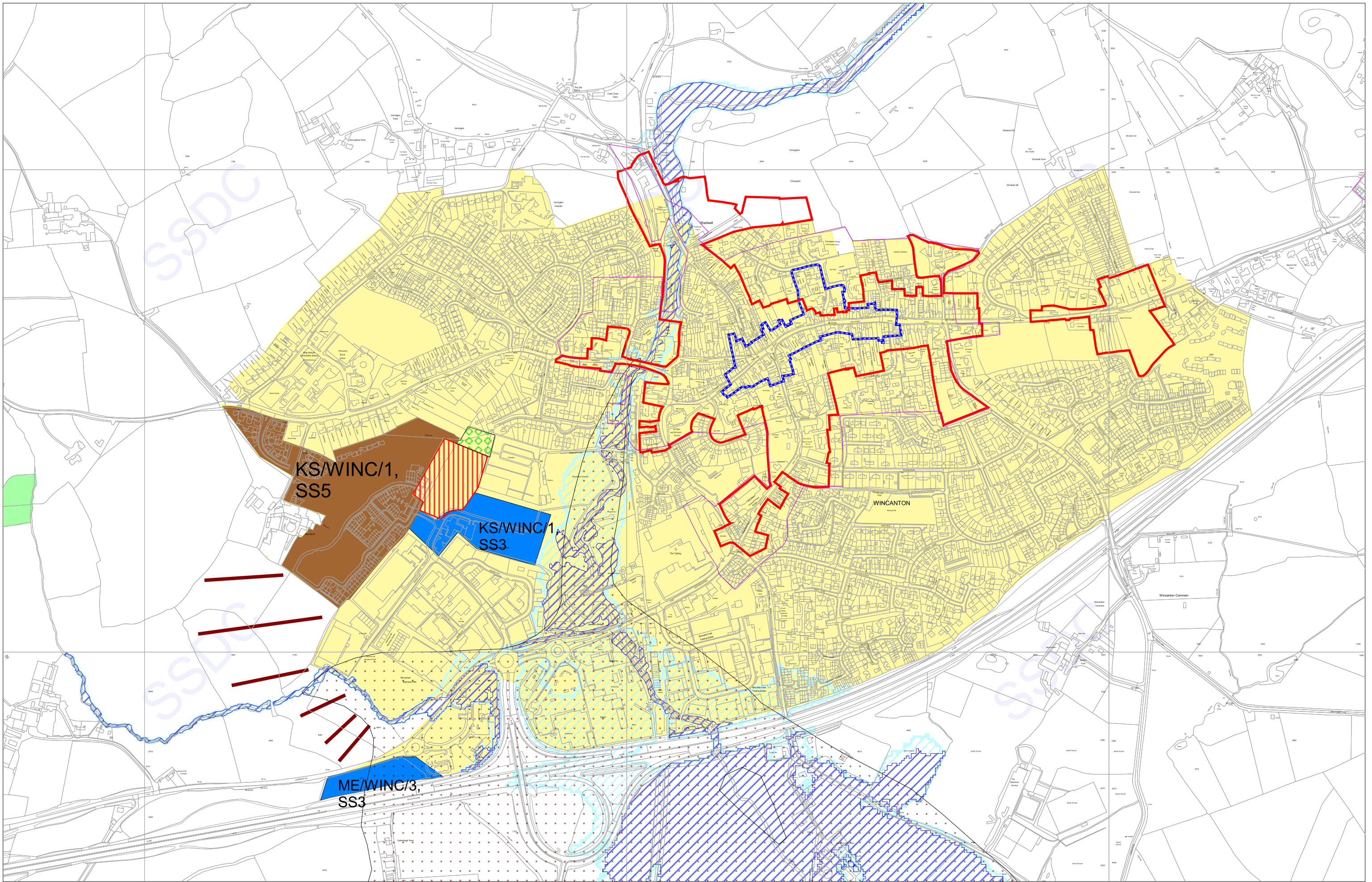


South Somerset Local Plan 2006 - 2028

Stoke Sub Hamdon - Inset Map 13 (Adopted 2015)

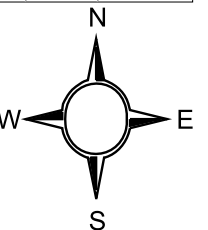
1:6,000



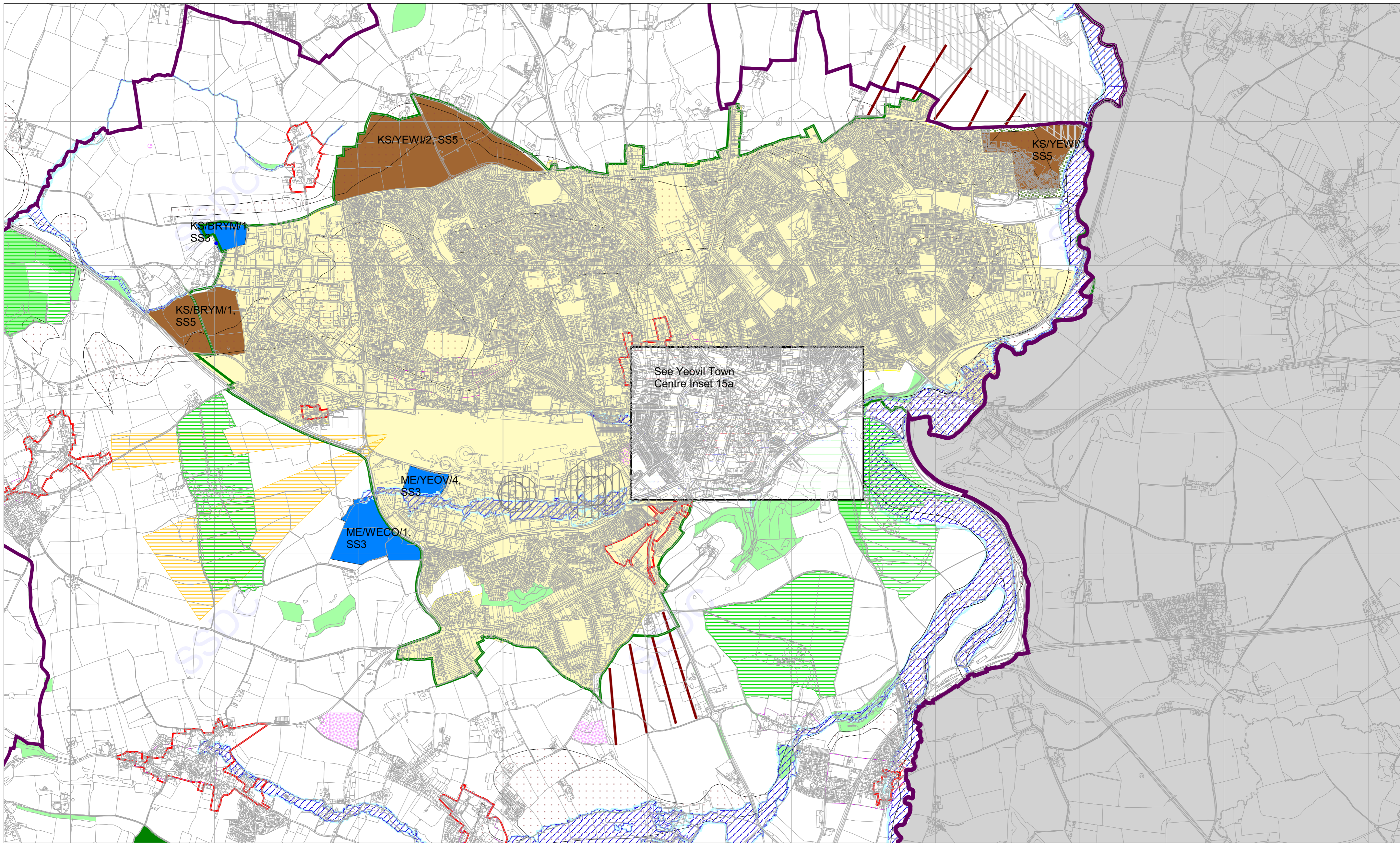


South Somerset Local Plan 2006 - 2028
 Wincanton - Inset Map 14 (Adopted 2015)

1:7,000



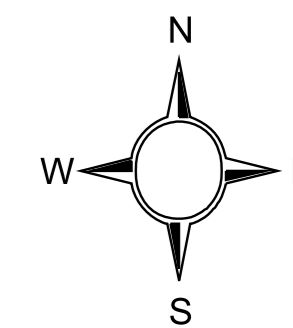
This map is reproduced from Ordnance Survey material with the permission of Ordnance Survey on behalf of the Controller of Her Majesty's Stationery Office © Crown Copyright. Unauthorised reproduction infringes Crown Copyright and may lead to prosecution or civil proceedings. South Somerset District Council Licence No. LA100019471-2015



South Somerset Local Plan 2006 - 2028

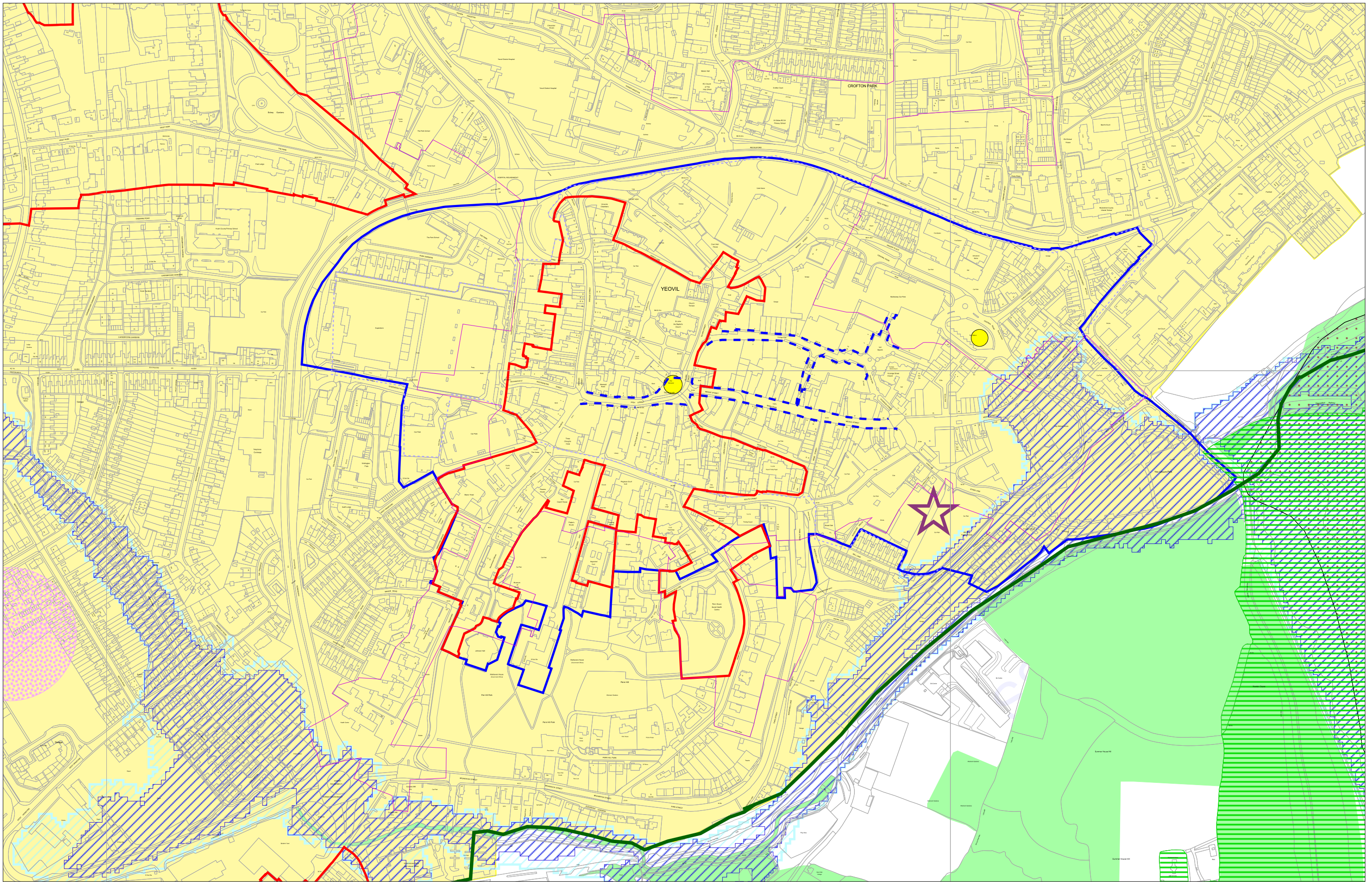
Yeovil - Inset 15 (Adopted 2015)

1:17,000



For Westlands Noise Contours Map see Appendix 4c

This map is reproduced from Ordnance Survey material with the permission of Ordnance Survey on behalf of the Controller of Her Majesty's Stationery Office © Crown Copyright. Unauthorised reproduction infringes Crown Copyright and may lead to prosecution or civil proceedings. South Somerset District Council Licence No. LA100019471-2015



South Somerset Local Plan 2006 - 2028
Yeovil Town Centre - Inset Map 15a (Adopted 2015)

1:4,000

This map is reproduced from Ordnance Survey material with the permission of Ordnance Survey on behalf of the Controller of Her Majesty's Stationery Office © Crown Copyright. Unauthorised reproduction infringes Crown Copyright and may lead to prosecution or civil proceedings. South Somerset District Council Licence No. LA100019471-2015

